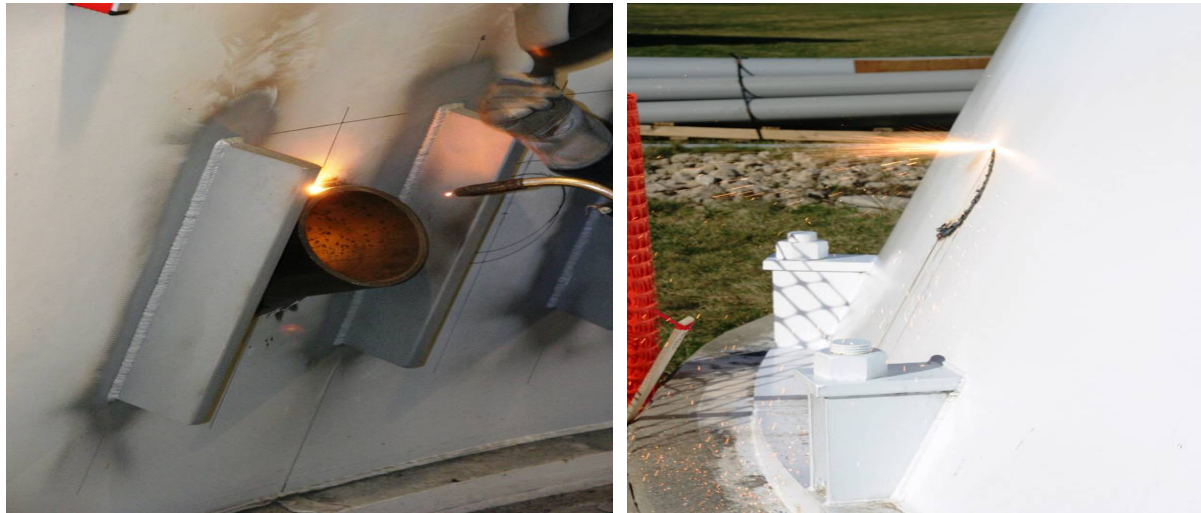


What's going on with DaneCom? See below:

Stoughton Water Tower



- Penetrations into the water tank were created last week
- New equipment shelter to be delivered the week of 3/28



Workers welding antenna mounts to the stem of the water tank.

DeForest



- Electric work began the week of 3/11
- Wall to be constructed (in the equipment space provided) once electric work is done

Rockdale



- Tower work continues (these guys are not afraid of heights)

Brigham



- Cable and antenna replacements are ongoing

City-County Building



- Symphony dispatch console hardware installed. Configuration of the dispatch screens begin.